

PETOSEGA IN

*pictures*



Cabin 5



Cabin 2



Cabins 1 & 3



Cabin 4

All cabins have a two-night minimum. Off-season rates are available online.

**Cabin 5 (above)**

- Full bath & kitchen
- Accommodates 6
- Rates: \$125-150

**Cabins 1-3**

- Rustic with electric heat and refrigerators; no plumbing
- Cabin 2 is handicap-accessible
- Open year 'round
- Accommodates 6
- Rates: \$40-50 in-season

**Cabin 4**

- Full bath & kitchen
- Accommodates 4
- Rates: \$125-150

Rates subject to change; tents prohibited on all cabin sites. Check-in is 3 p.m. Check-out is 11 a.m.

For the most current rental rates for camp sites and cabins, please visit

[www.emmetcounty.org/petosega/](http://www.emmetcounty.org/petosega/)

call (231) 347-6536

[CampPetosega@emmetcounty.org](mailto:CampPetosega@emmetcounty.org)



Cabin D

**Cabins**

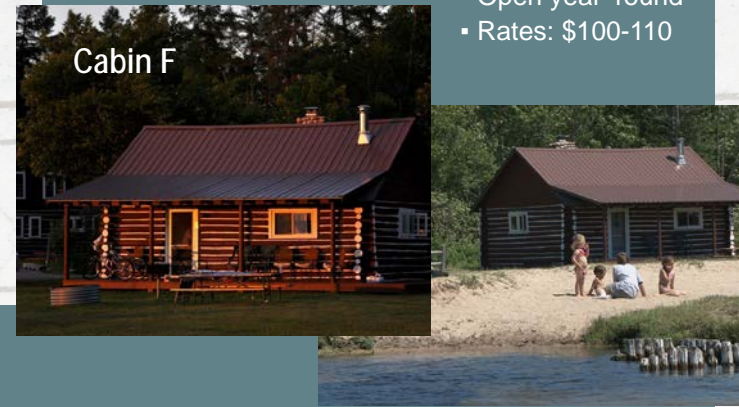


**Cabin F (below)**

- Just before bridge
- Accommodates 8
- Small kitchen, gas stove, fireplace
- Open year 'round
- Rates: \$100-110

**Cabin D (above)**

- Closest to Rec Hall
- Accommodates 8-10 in two-story building
- Small kitchen, furnace, fireplace
- Open year 'round
- Rates: \$100-110



Cabin F

**Camp site rentals**



- 90 sites available
- Site-specific: Choose your site!
- Two-night minimum
- Tent and camper sites available; several barrier-free sites
- One camping unit/site
- Rates: \$18-20/night



**Facilities**



**Rec Hall (above)**

- Accommodates 100
- Full kitchen
- Rates: \$200-225



**Pavilion (left)**

- Accommodates 70
- Rates: \$60-75

*History*

**BEDOSAGAY TO PET-O-SE-GA**

Bedosagay (Pet-O-Se-Ga), named in honor of the rising sun, was born to the Odawa tribe in 1787. Today, Bedosagay's name is kept alive throughout the region as "Petoskey."

Camp Pet-O-Se-Ga was constructed by Jim Templin in the 1930's. Established as a boys' camp, the young men were instructed in a variety of activities including: athletics, archery, riflery, orienteering camping and aviation.



A second chapter unfolded when Templin sold the property in the early 1950s to Leonard Baruch and Bertrand Sandweiss, who had been running a children's summer camp together near Chelsea, Mich.

They worked so well together, they decided to open their own camp for kids in Northern Michigan. Real estate agent Herman Kays contacted the men and informed them about Camp Petosega which, upon visiting, they described as a hidden "Shangri la."

The purchase was finalized in 1955 and renovations began, including installation of restroom facilities in the cabins, new bedding and much more.

The first summer season began in 1956; the last was in the spring of 1978 after fire destroyed several buildings and the decision was made to not rebuild.

Emmet County purchased the property in 1992 to be used as a county park and, while adding modern amenities, has preserved the historic atmosphere of the camp. The park encompasses some 300 acres and offers year round recreation to visitors. There are marked nature trails throughout the park, a swimming beach on Pickerel Lake and trout fishing on Cedar Creek which bisects the property.

It is Emmet County's goal to provide a memorable experience for all park visitors. Whether cross-country skiing and/or snow-shoeing through the groomed nature trails or fishing for trout in Cedar Creek, you will be inspired by Camp Pet-O-Se-Ga's scenic beauty.

*We look forward to your visit with us!*

**Getting here**

Camp Pet-O-Se-Ga in Emmet County is conveniently accessible from north and south. The nearby towns of Alanson, Petoskey, Indian River, Harbor Springs and Mackinaw City offer everyday conveniences and family-friendly day trip activities.

Situated on Pickerel Lake, Camp Pet-O-Se-Ga provides a perfect stop on an Inland Waterway tour.



**CAMP PET-O-SE-GA**

11000 Camp Pet-O-Se-Ga Dr.  
Alanson, Michigan 49706

**RESERVE YOUR SPACE!**

Reservations recommended for cabins, campground, rec hall and pavilion rental:

231.347.6536

[www.emmetcounty.org/petosega/](http://www.emmetcounty.org/petosega/)  
[info@emmetcounty.org](mailto:info@emmetcounty.org)

Camp Pet-O-Se-Ga is a public recreational property owned & operated by Emmet County.

*Emmet County, Michigan*

**CAMP PET-O-SE-GA**

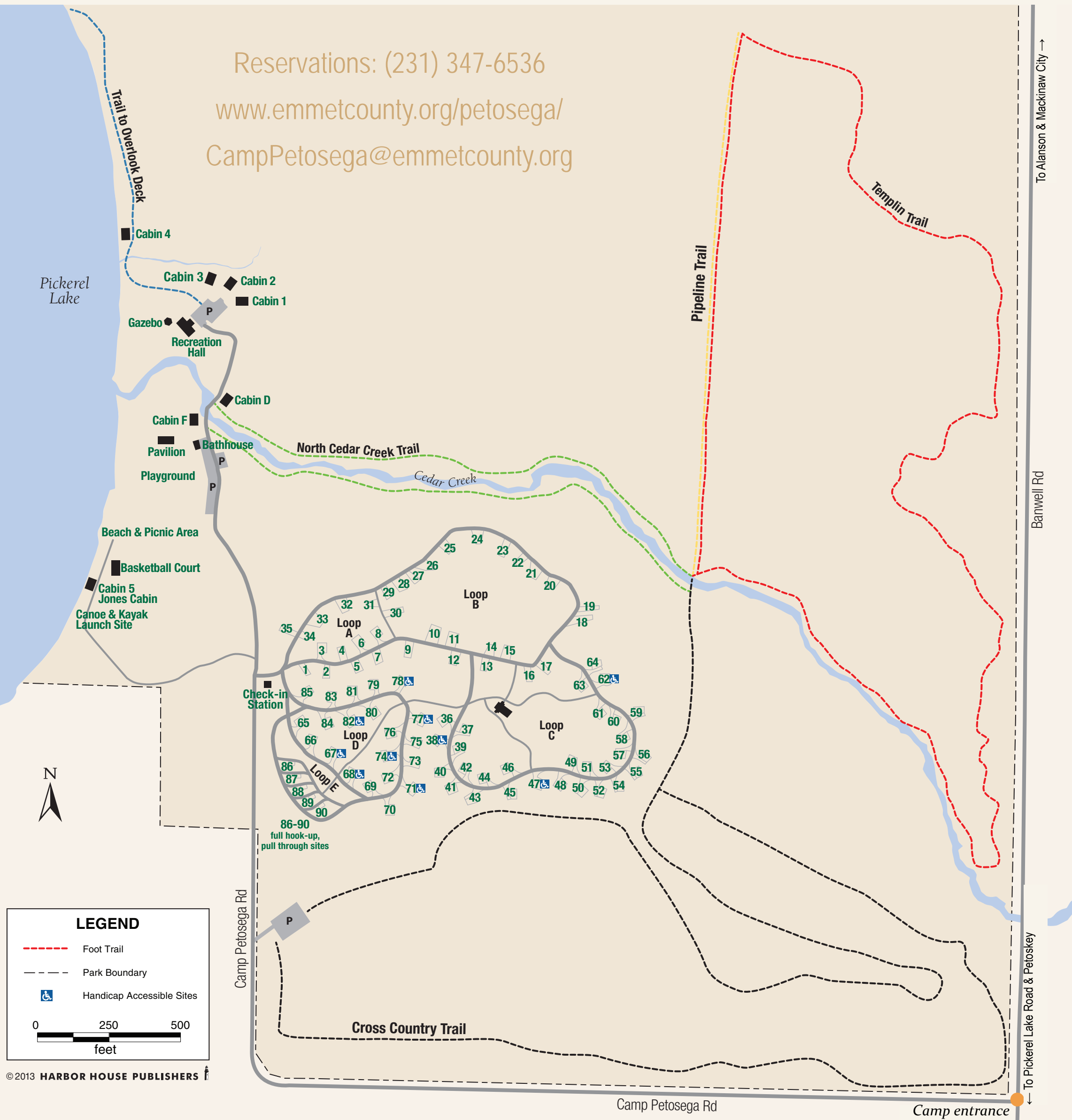
Family camping on Pickerel Lake



[WWW.EMMETCOUNTY.ORG](http://WWW.EMMETCOUNTY.ORG)



Reservations: (231) 347-6536  
[www.emmetcounty.org/petosega/](http://www.emmetcounty.org/petosega/)  
[CampPetosega@emmetcounty.org](mailto:CampPetosega@emmetcounty.org)



© 2013 HARBOR HOUSE PUBLISHERS

## Camp features - open year round!

- 90 RV and camp sites with electric and water; 5 pull-through sites with water and sewer hookup
- 10 universally accessible sites
- Four-season cabin rentals: Cabins 1, 2, 3, 4 and 5; and Cabins D and F  
*(rates: [www.emmetcounty.org/petosega/](http://www.emmetcounty.org/petosega/))*
- Restrooms and showers
- Swimming beach on Pickerel Lake
- Day-use area
- Basketball courts
- Miles of trails for hiking, nature exploration, snowshoeing & groomed cross country skiing
- Fishing and ice fishing
- Outdoor games field
- ADA accessible playground coming soon!
- Nearby boat launch
- Reserve the Rec Hall or Pavilion for your event
- Canoe and kayak launch on Pickerel Lake

Please note: All sites require a two-night minimum; cabin and recreation hall deposits are non-refundable if the reservation is canceled at any time.

